

CONSTRUCTION	Tufting 1/10" loop pile	STAIR SUITABILITY	EN 1963
STRUCTURE	Tufté 1/10" bouclé	ESCALIERS	A: intensive use
STRUKTUR	Getuftet 1/10" Schlinge	TREPPENEIGNUNG	
STRUCTUUR	Getuft 1/10" lussenpool	TRAPPENGESCHIKTHEID	
PILE MATERIAL	100% PA 6 IMPREL®	PERMANENTLY ANTISTATIC	ISO 6356
COMPOSITION DU VELOURS	solution dyed	ANTISTATIC PERMANENT	< 2 kV
POLMATERIAL		PERMANENT ANTISTATISCH	
POOLMATERIAAL		PERMANENT ANTISTATISCH	
PRIMARY BACKING	non woven PES	IMPACT NOISE RATING	ISO 140-8
SUPPORT	PES non tissé	ISOLATION PHONIQUE	25 dB ΔLw
TRÄGERMATERIAL	PES Vlies	TRITTSCHALLVERBESSERUNG	
TUFTDOEK	PES vilt	GELUIDSISOLATIE	
SECONDARY BACKING	Action Back	SOUND ABSORPTION	ISO 354
DOSSIER		ABSORPTION PHONIQUE	0,15 αw
RÜCKEN		SCHALLABSORPTIONSGRAD	
TAPIJTRUG		GELUIDSABSORPTIE	
PILE WEIGHT	Ca. 540 gr/m ²	THERMAL RESISTANCE	ISO 8302
POIDS DU VELOURS		RÉSISTANCE THERMIQUE	0,07 m ² K/W
POLEINSATZGEWICHT		WÄRMEDURCHLASSWIDERSTAND	
POOLGEWICHT		WARMTEDOORLAATWEERSTAND	
TOTAL WEIGHT	Ca. 1.800 gr/m ²	FASTNESS TO LIGHT	ISO 105-B02
POIDS TOTAL		SOLIDITÉ A LA LUMIÈRE	≥ 7
GESAMTGEWICHT		LICHTECHTHEIT	
TOTAAL GEWICHT		LICHTECHTHEID	
PILE HEIGHT	Ca. 3,0 mm	COLOUR FASTNESS TO WATER	EN ISO 105-E01
EPAISSEUR DU VELOURS		SOLIDITÉ À L'EAU	≥ 4-5
POLHÖHE		WASSERECHTHEIT	
POOLHOOGTE		WATERECHTHEID	
TOTAL HEIGHT	Ca. 5,4 mm	FIRE RESISTANCE	EN 13501-1
EPAISSEUR TOTAL		COMPORTEMENT AU FEU	Bfl-s1(if glued)
GESAMTHÖHE		BRENNVERHALTEN	
TOTALE DIKTE		BRANDGEDRAG	
TUFT DENSITY	Ca. 180 000/m ²	RUBBING FASTNESS	EN ISO 105-X12
NOMBRES DE POINTS		SOLIDITÉ AU FROTTEMENT	≥ 4
NOPPENZAHL		REIBECHTHEIT	
AANTAL PUNTEN		WRIJFECHTHEID	
PILE DENSITY	Ca. 0.111 g/cm ³	NUMBER OF COLOURS	12
DENSITÉ DU VELOURS		NOMBRES DE COULEURS	
POLROHDICHTHEIT		ANZAHL FARBEN	
POOLDICHTHEID		AANTAL KLEUREN	
CLASSIFICATION	EN 1307	WIDTH	EN ISO 3018
CLASSEMENT	33 - LC1	LARGEUR	ca. 400 cm
KLASSIFIKATION		BREITE	
CLASSIFICATIE		BREEDTE	
CASTOR CHAIR SUITABILITY	EN 985		
CHAISE À ROULETTES	A: intensive use		
STUHLROLLENEIGNUNG			
ROLSTOELGESCHIKTHEID			

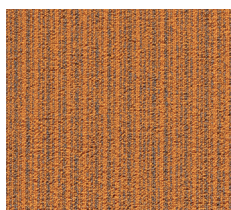


EAC

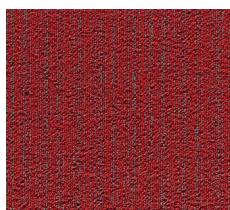




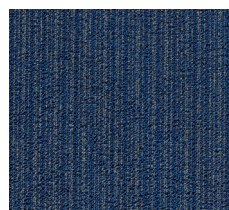
▲ 130



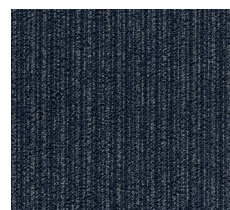
▲ 306



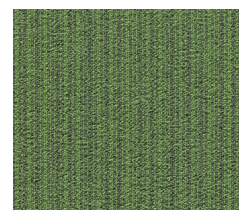
▲ 332



▲ 550



▲ 578



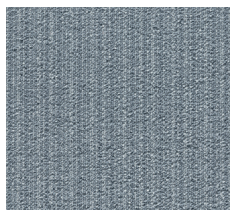
▲ 669



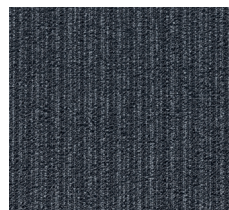
▲ 914



▲ 942



▲ 957



▲ 961



▲ 991



▲ 106