

CONSTRUCTION STRUCTURE STRUKTUR STRUCTUUR	Tufting 5/64" minituft Tufté 5/64" minituft Getuftet 5/64" minituft Getuft 5/64" minituft	STAIR SUITABILITY ESCALIERS TREPPENEIGNUNG TRAPPENGESCHIKTHEID	EN 1963 A: intensive use
PILE MATERIAL COMPOSITION DU VELOURS POLMATERIAL POOLMATERIAAL	100% PA 6 solution dyed	PERMANENTLY ANTISTATIC ANTISTATIQUE PERMANENT PERMANENT ANTISTATISCH PERMANENT ANTISTATISCH	ISO 6356 < 2 kV
PRIMARY BACKING SUPPORT TRÄGERMATERIAL TUFTDOEK	Non woven PES Non tissé PES Vlies, PES Vilt, PES	IMPACT NOISE RATING ISOLATION PHONIQUE TRITTSCHALLVERBESSERUNG GELUIDSISOLATIE	ISO 140-8 18 dB ΔLw
SECONDARY BACKING DOSSIER RÜCKEN TAPIJTRUG	Action Back	SOUND ABSORPTION ABSORPTION PHONIQUE SCHALLABSORPTIONSGRAD GELUIDSABSORPTIE	ISO 354 0.15 αw
PILE WEIGHT POIDS DU VELOURS POLEINSATZGEWICHT POOLGEWICHT	Ca. 500 gr/m ²	THERMAL RESISTANCE RÉSISTANCE THERMIQUE WÄRMEDURCHLASSWIDERSTAND WARMTEDOORLAATWEERSTAND	ISO 8302 0.05 m ² K/W
TOTAL WEIGHT POIDS TOTAL GESAMTGEWICHT TOTAAL GEWICHT	Ca. 2.400 gr/m ²	FASTNESS TO LIGHT SOLIDITÉ A LA LUMIÈRE LICHTECHTHEIT LICHTECHTHEID	ISO 105-B02 ≥ 7
PILE HEIGHT EPAISSEUR DU VELOURS POLHÖHE POOLHOOGTE	Ca. 1,1 mm	COLOUR FASTNESS TO WATER SOLIDITÉ À L'EAU WASSERRECHTHEIT WATERECHTHEID	EN ISO 105-E01 ≥ 4-5
TOTAL HEIGHT EPAISSEUR TOTALE GESAMTHÖHE TOTALE DIKTE	Ca. 5,1 mm	RUBBING FASTNESS SOLIDITÉ AU FROTTEMENT REIBECHTHEIT WRIJFECHTHEID	EN ISO 105-X12 ≥ 4
TUFT DENSITY NOMBRES DE POINTS NOPPENZAHL AANTAL PUNTEN	Ca. 200 000/m ²	FIRE RESISTANCE COMPORTEMENT AU FEU BRENNVERHALTEN BRANDGEDRAG	EN 13501-1 Cfl-s1 (if glued)
PILE DENSITY DENSITÉ DU VELOURS POLROHDICHTE POOLDICHTHEID	Ca. 0.140 g/cm ³	NUMBER OF COLOURS NOMBRES DE COULEURS ANZAHL FARBEN AANTAL KLEUREN	11
CLASSIFICATION CLASSEMENT KLASSIFIKATION CLASSIFICATIE	EN 1307 33 - LC1	WIDTH LARGEUR BREITE BREEDTE	EN ISO 3018 ca. 400 cm
CASTOR CHAIR SUITABILITY CHAISE À ROULETTES STUHLROLLENEIGNUNG ROLSTOELGESCHIKTHEID	EN 985 A: intensive use		



EN14041
CE
19
Balta Industries - Kanegem-
straat 15 - BE 8700 Tielt
DOP: 1011#IE0ACV
Textile Floor Covering EN1307
Notified body 2401
DL NA PCP HCHO US
www.baltamediabank.com

EAC

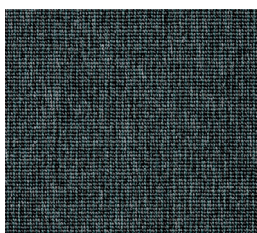


REG. NR
7E146FDC
www.pro-dis.info

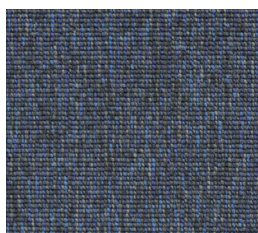




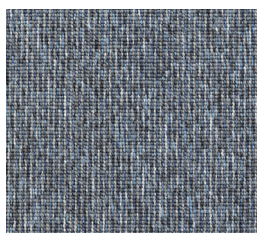
▲ 93



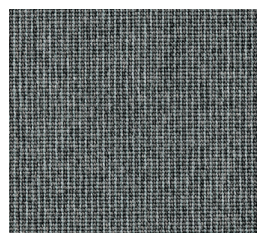
▲ 73



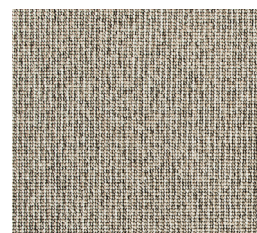
▲ 78



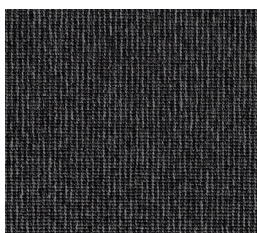
▲ 79



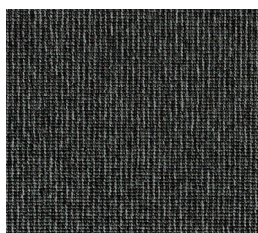
▲ 90



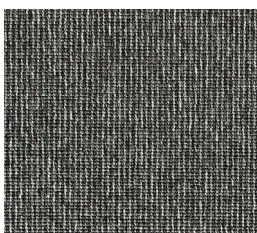
▲ 34



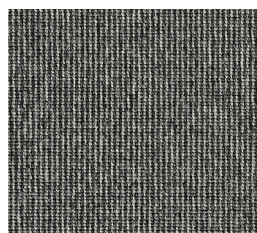
▲ 94



▲ 99



▲ 98



▲ 96



▲ 49